

# SensoWash®

---

<b>Serviceanleitung</b>	Entkalkungspumpe SensoWash® Slim, Starck, Starck C/e
<b>Service instructions</b>	Descaling pump for the SensoWash® Slim, Starck, Starck C/e
<b>Instructions de service</b>	Pompe de détartrage SensoWash® Slim, Starck, Starck C/e
<b>Servicehandleiding</b>	Ontkalkingspomp SensoWash® Slim, Starck, Starck C/e
<b>Instrucciones de mantenimiento</b>	Bomba de descalcificación SensoWash® Slim, Starck, Starck C/e
<b>Istruzioni di manutenzione</b>	Pompa per decalcificazione per SensoWash® Slim, Starck, Starck C/e
<b>Instruções de serviço</b>	Bomba de descalcificação SensoWash® Slim, Starck, Starck C/e
<b>Servicevejledning</b>	Afkalkningspumpe SensoWash® Slim, Starck, Starck C/e
<b>Huolto-ohje</b>	Kalkinpoistopumppu SensoWash® Slim, Starck, Starck C/e
<b>Servicehåndbok</b>	Avkalkningspumpe SensoWash® Slim, Starck, Starck C/e
<b>Serviceanvisning</b>	Avkalkningspump SensoWash® Slim, Starck, Starck C/e
<b>Teenindusjuhend</b>	Katlakivieemalduspump SensoWash® Slim, Starck, Starck C/e
<b>Instrukcja serwisowa</b>	Pompa odkamieniająca SensoWash® Slim, Starck, Starck C/e
<b>Руководство по техобслуживанию</b>	Насос для удаления извести SensoWash® Slim, Starck, Starck C/e
<b>Servisní návod</b>	Odvápňovací čerpadlo SensoWash® Slim, Starck, Starck C/e
<b>Servisný návod</b>	Odvápňovacie čerpadlo SensoWash® Slim, Starck, Starck C/e
<b>Szerviz útmutató</b>	SensoWash® Slim, Starck, Starck C/e vízkőeltávolító szivattyú
<b>Upute za servisiranje</b>	Pumpa za uklanjanje kamenca SensoWash® Slim, Starck, Starck C/e
<b>Instrucțiuni de service</b>	Pompă de decalcifiere SensoWash® Slim, Starck, Starck C/e
<b>Navodila za servisiranje</b>	Črpalka za odstranjevanje apnenca SensoWash® Slim, Starck, Starck C/e
<b>Инструкции за сервис</b>	Помпа за декалцификация SensoWash® Slim, Starck, Starck C/e
<b>Apkopes instrukcija</b>	Atkaļķošanas sūkņis SensoWash® Slim, Starck, Starck C/e
<b>Techninés priežiūros instrukcija</b>	Kalkių šalinimo siurblys „SensoWash® Slim“, „Starck“, „Starck C/e“
<b>Servis kılavuzu</b>	SensoWash® Slim, Starck, Starck C/e kireç çözme pompası
<b>服务说明书</b>	除垢泵 SensoWash® Slim、Starck、Starck C/e
<b>수리 설명서</b>	석회 제거 펌프 SensoWash® Slim, Starck, Starck C/e



## Belangrijke aanwijzingen

### Beoogd gebruik

De ontkalkingsset is bestemd voor het ontkalken van Duravit SensoWash® douche-wc's.

### Doelgroep en kwalificatie

Het ontkalken van de SensoWash® mag alleen door personen worden uitgevoerd die chemische reinigingsmiddelen deskundig kunnen gebruiken.

### Uitleg van de signaalwoorden en symbolen



Beschrijft een gevaarlijke situatie die tot lichte letsels kan leiden als deze niet wordt voorkomen.



Verwijzing naar **serviceaanwijzing** in dit hoofdstuk



Visuele controle uitvoeren



Er dienen handschoenen te worden gedragen



Indicatie van de tijdsduur (bijv. 10 minuten)

### Veiligheidsvoorschriften

De servicehandleiding is een onderdeel van de Duravit ontkalkingspomp en moet vóór gebruik zorgvuldig worden gelezen.

#### Levensgevaar door elektrische schok

- > Afzonderlijke componenten van de SensoWash® mogen niet worden gedemonteerd.
- > Laat een beschadigde voedingskabel vervangen door de fabrikant of diens klantenservice of een soortgelijk gekwalificeerde persoon.

#### Risico voor de gezondheid

Gebrekkige veiligheids- en hygiënemaatregelen kunnen risico's voor de gezondheid veroorzaken.

- > De aanwijzingen op de verpakking van het ontkalkingsmiddel moeten worden gelezen en in acht worden genomen.
- > Bewaar het ontkalkingsmiddel buiten bereik van kinderen.

- > Houd levensmiddelen, drinken en voer uit de buurt van het ontkalkingsmiddel.
- > Draag bij het gebruik van het ontkalkingsmiddel handschoenen.
- > Was na gebruik de handen.
- > Voorkom contact met ogen en huid.
- > Verwijder ontkalkingsmiddel conform de plaatselijke en landspecifieke voorschriften en normen.

#### Beschadiging van het product

Door het gebruik van materialen die niet tot de levering van de ontkalkingsset behoren, kan de SensoWash® worden beschadigd en de functie ervan worden beperkt.

- > Gebruik alleen de meegeleverde watertoevoerlangen.

#### Kalkschade

Door de verkalking kan de SensoWash® worden beschadigd en de functie ervan worden beperkt.

- > Ontkalk de SensoWash® volgens de tabel:

Waterhardheid		Ontkalkingscyclus
zacht	<8,4° dH (1,5 mmol/l)	halfjaarlijks
gemiddeld	8,4 – 14° dH (1,5 – 2,5 mmol/l)	halfjaarlijks
hard	>14° dH (2,5 mmol/l)	driemaandelijks

#### Materiële schade

Ondeskundig gebruik van het ontkalkingsmiddel kan tot materiële schade leiden.

- > De aanwijzingen op de verpakking van het ontkalkingsmiddel moeten worden gelezen en in acht worden genomen.

Ongeschikte ontkalkingsmiddelen kunnen schade aan het product veroorzaken.

- > Gebruik alleen originele of door Duravit vrijgegeven ontkalkingsmiddelen.



## Belangrijke aanwijzingen

### Serviceaanwijzingen

#### 23 + 83 Douchestang uit- en inschuiven

- > Druk, om de douchestang uit te schuiven, op de toets Stop en houd deze ingedrukt, druk vervolgens op de toets Zitvlakdouche resp. Zitvlakdouche Plus. De douchestang beweegt na 2 minuten automatisch terug.

#### 40 Temperatuur uitschakelen

- > Stel de temperatuur in op de minimale waarde.

#### 42 + 46 + 55 Pompsproeier bedienen

- > Houd de sproeitoets gedurende het gehele spoelproces ingedrukt.

#### 43 + 47 + 48 + 55 + 89 + 90 Stromingstijd

- Zodra het water stroomt, begint de tijd te lopen.

#### 54 + 56 Zelfreiniging uitvoeren/stoppen

- > Druk op de toets Stop en houd deze ingedrukt, druk vervolgens op de toets Comfortdouche Plus.

#### 88 Temperatuur inschakelen

- > Stel de temperatuur in op de maximale waarde.

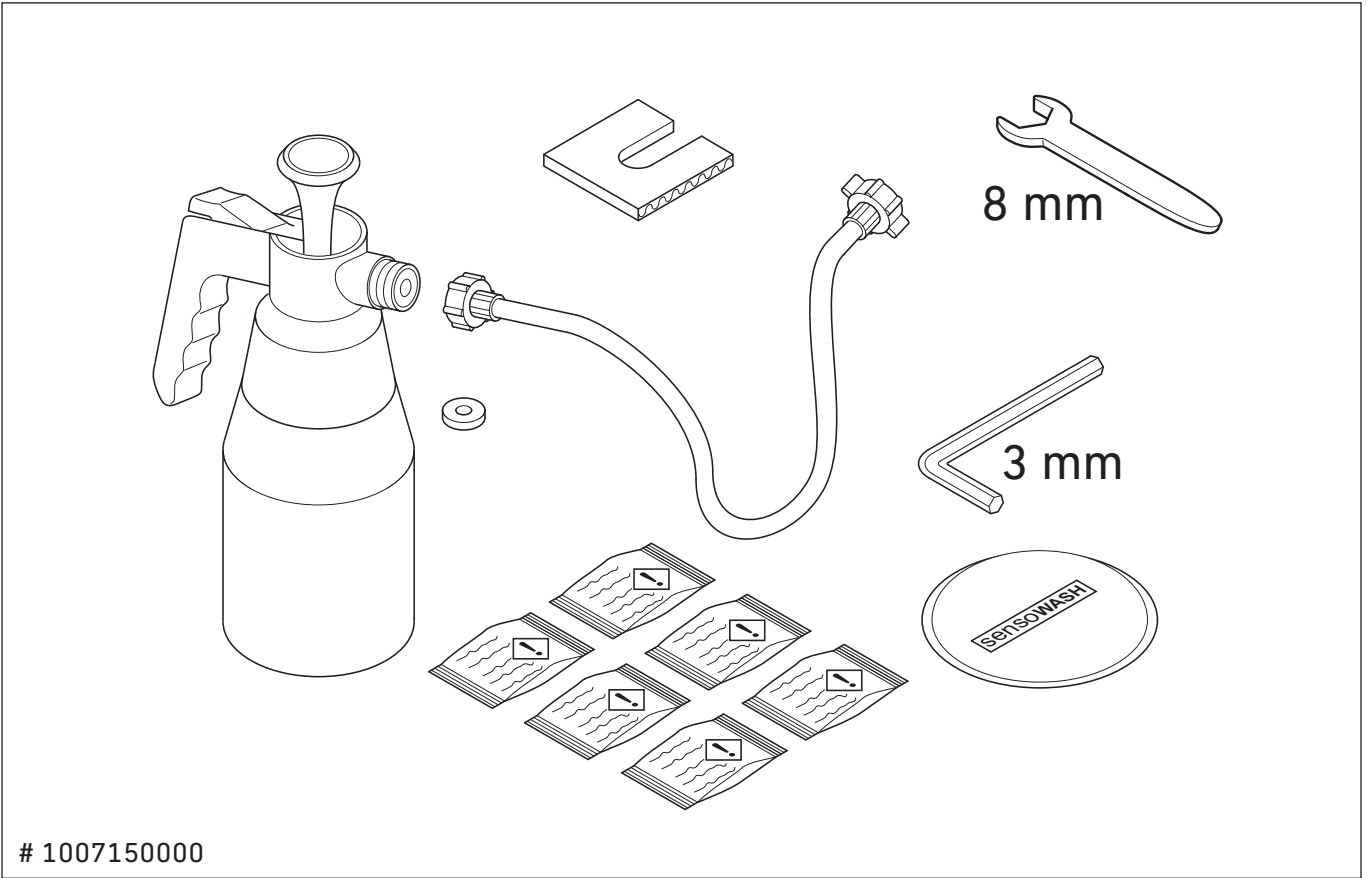
#### 95 Pompsproeier reinigen



**VOORZICHTIG**

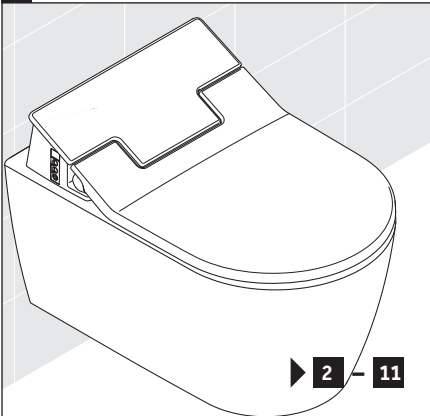
**Risico voor de gezondheid door verkeerde reiniging!**

- > Voer voor een volledige reiniging van de pompsproeier met pompkop meerdere pompsproeicycli met vers water uit.

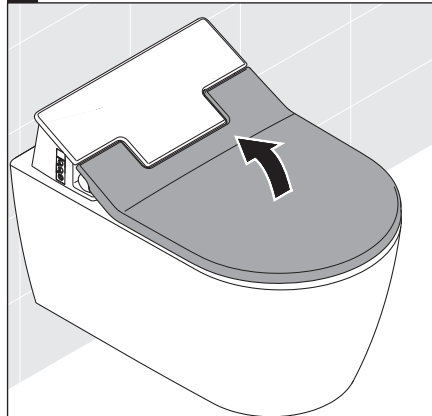




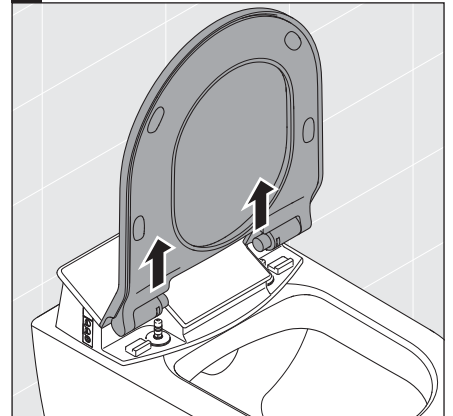
1 SensoWash® Slim



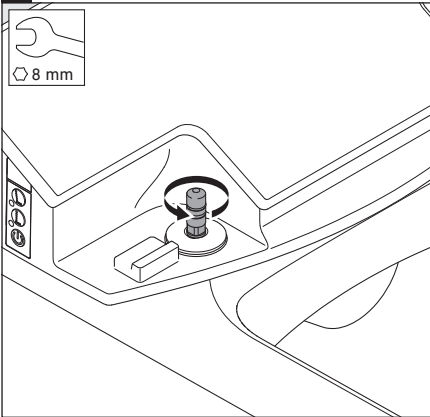
2



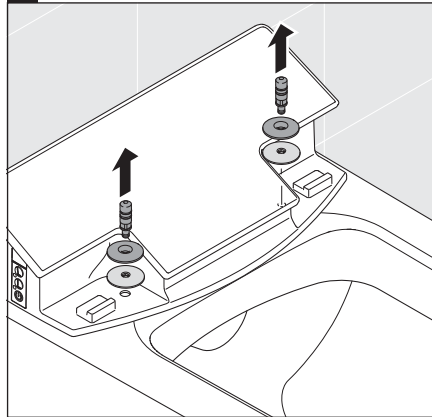
3



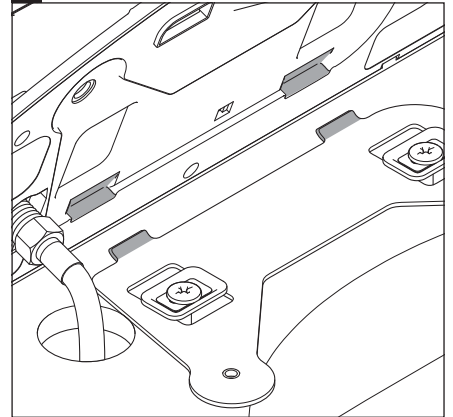
4



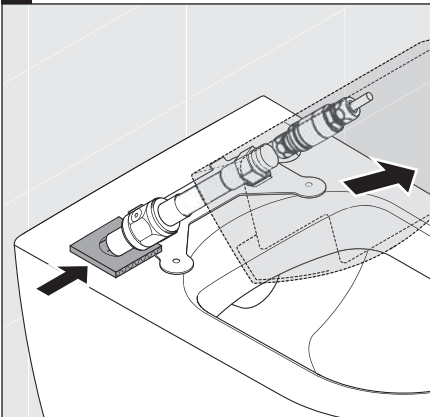
5



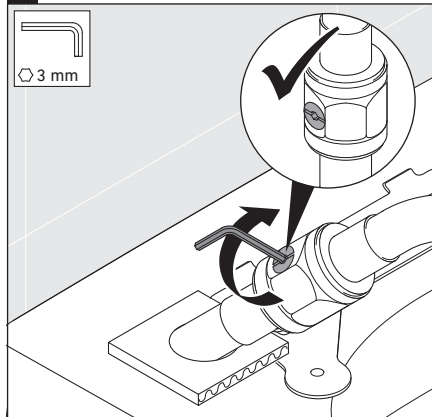
6



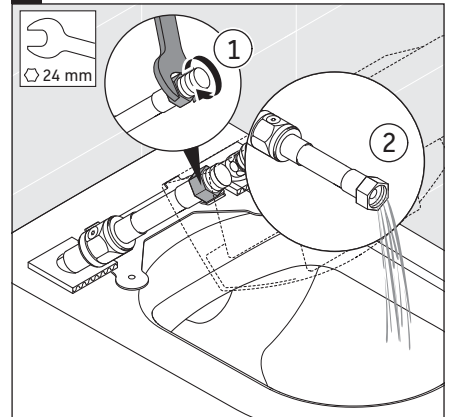
7



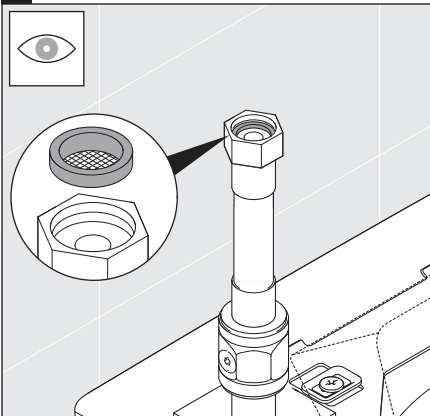
8



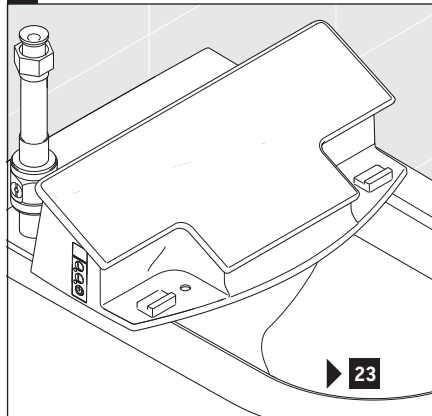
9



10

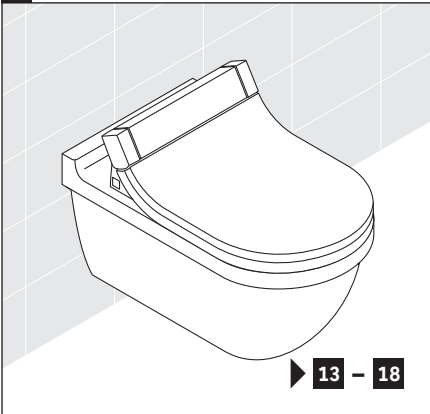


11

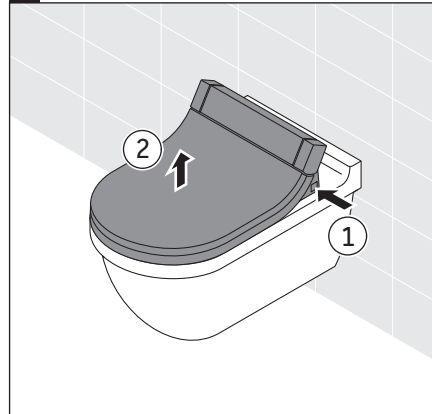




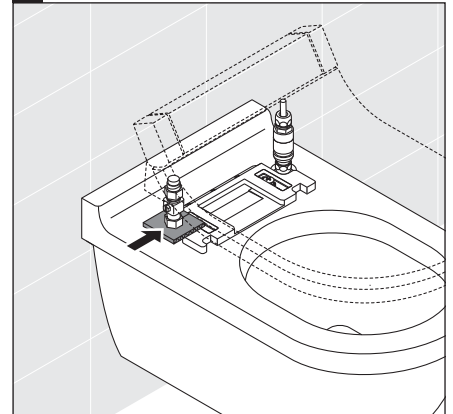
12 SensoWash® Starck C/e



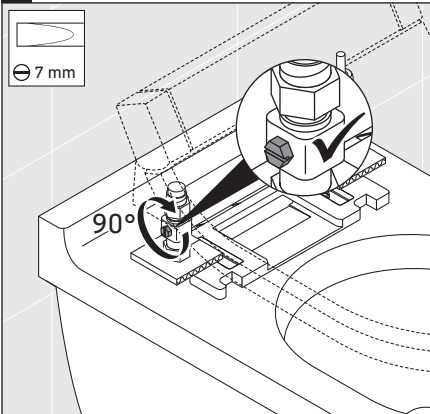
13



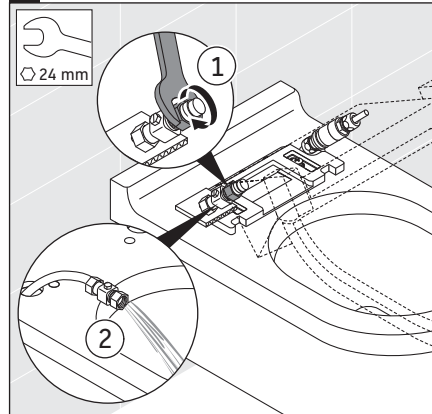
14



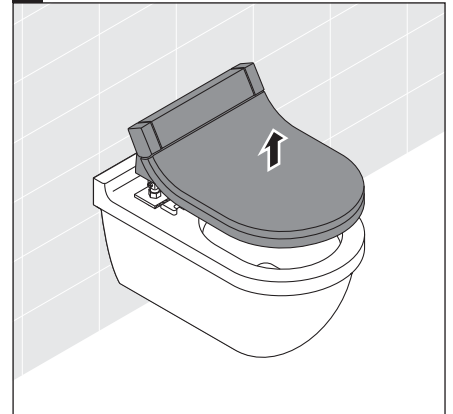
15



16



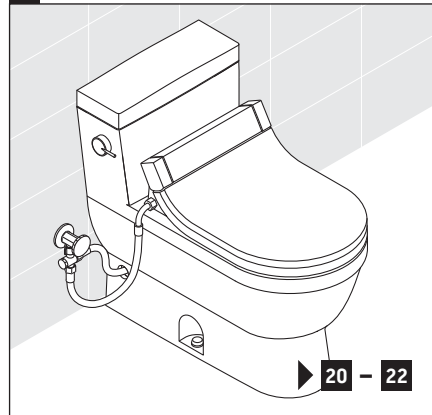
17



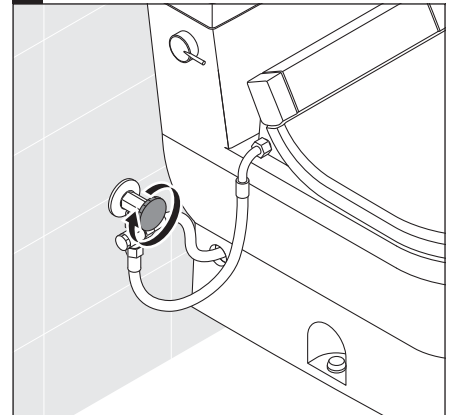
18



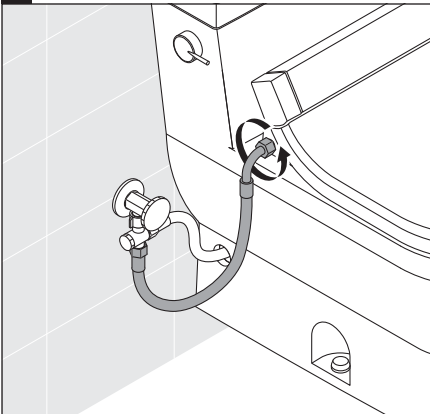
19 SensoWash® Starck



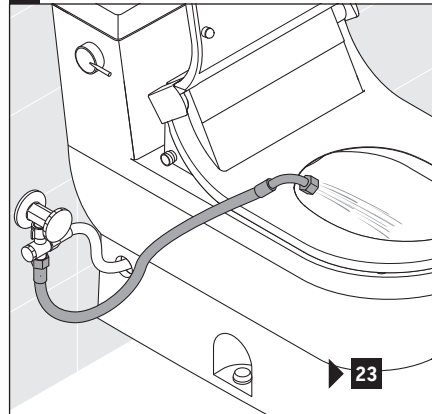
20

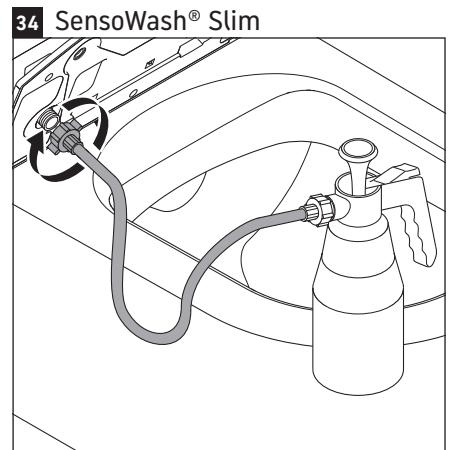
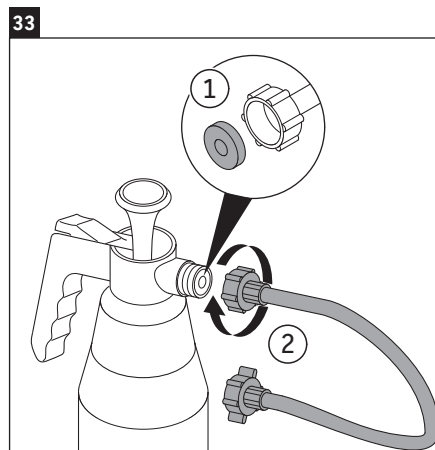
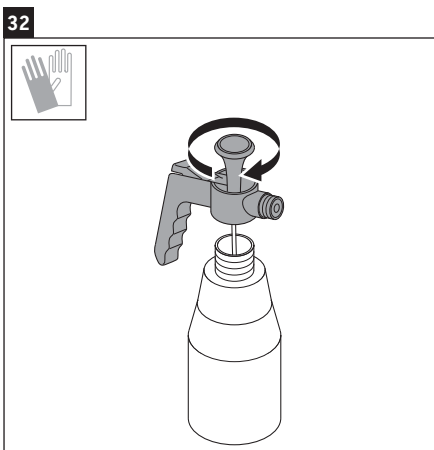
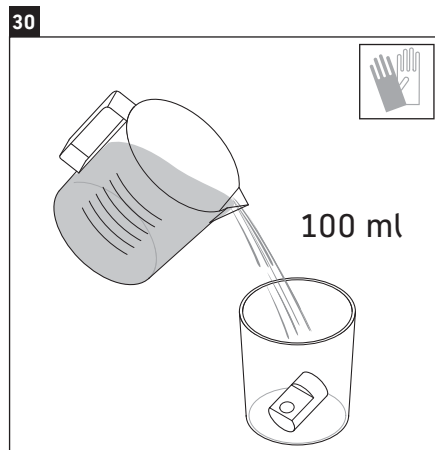
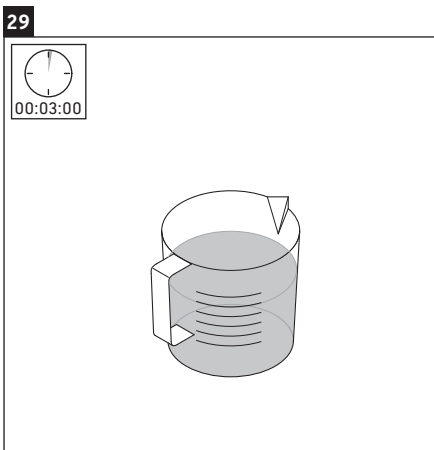
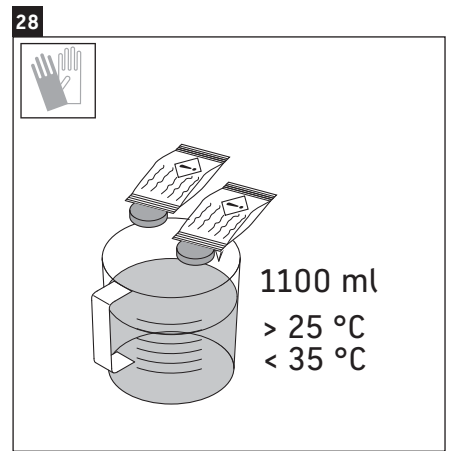
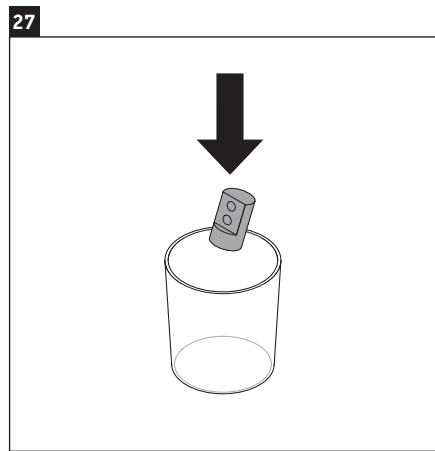
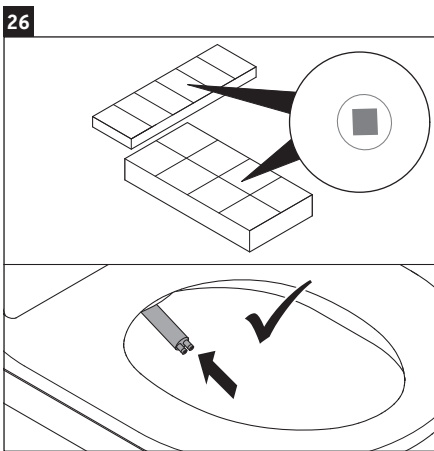
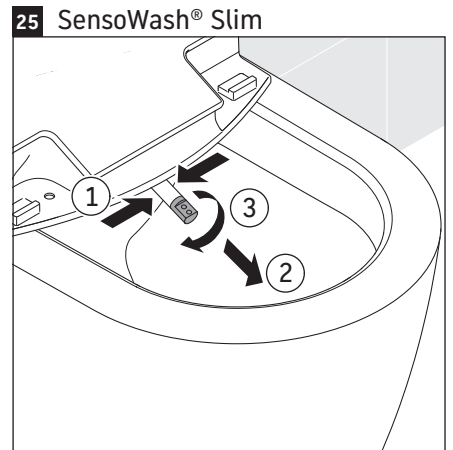
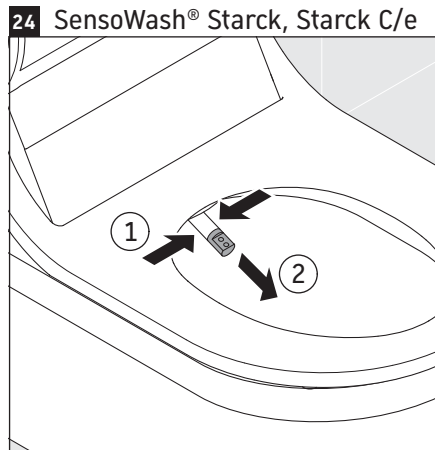
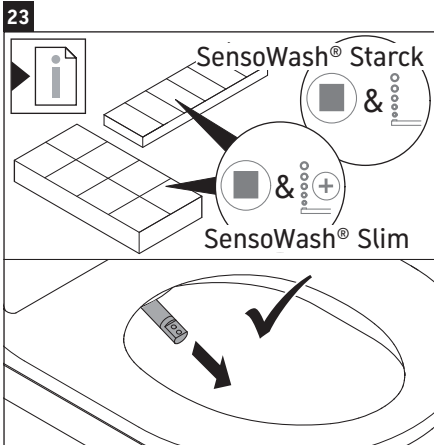


21



22

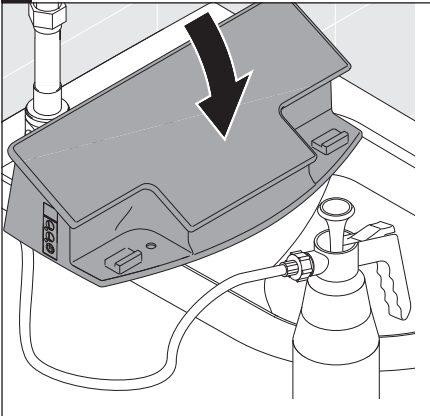




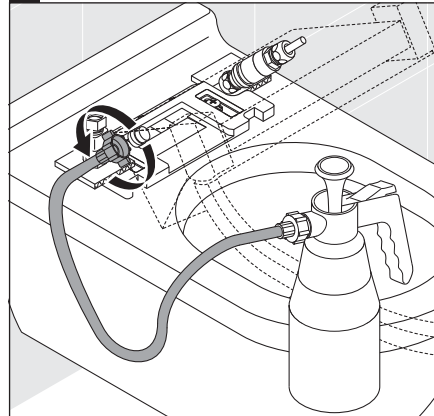




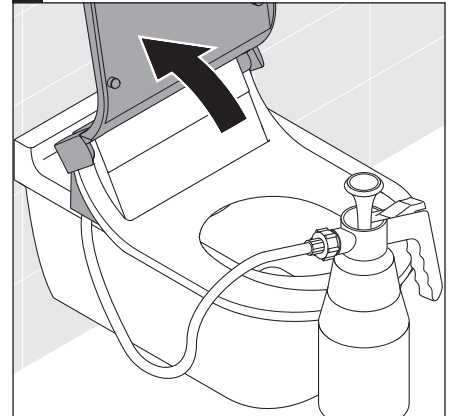
35 SensoWash® Slim



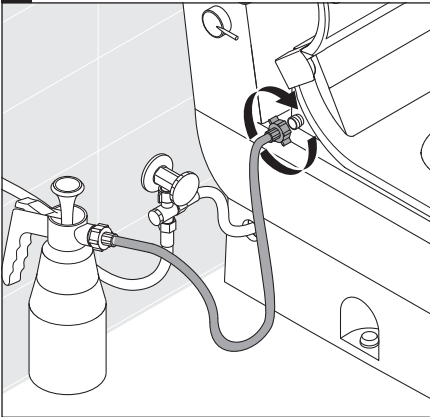
36 SensoWash® Starck C/e



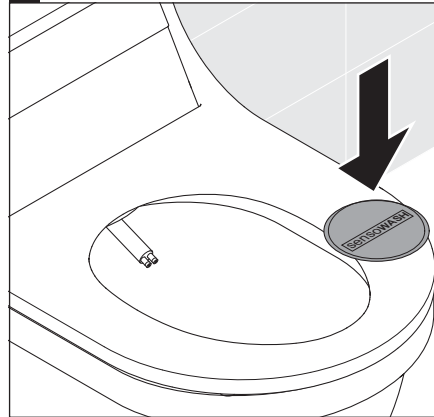
37 SensoWash® Starck C/e



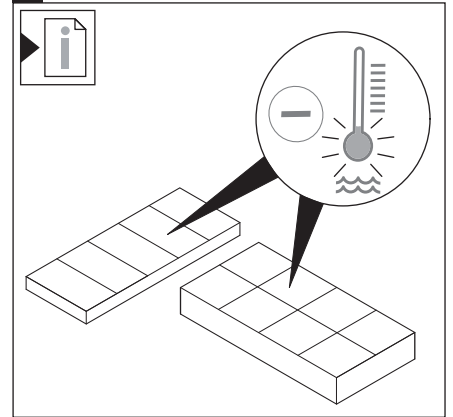
38 SensoWash® Starck



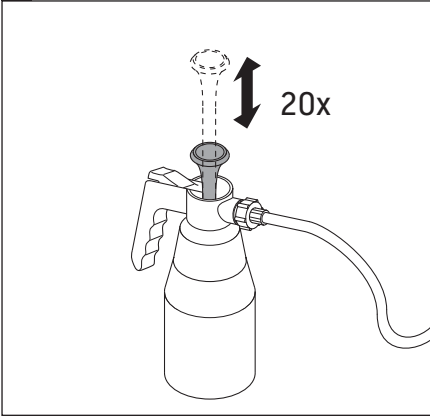
39 SensoWash® Starck, Starck C/e



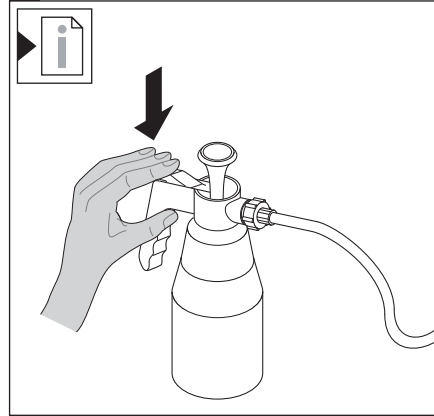
40



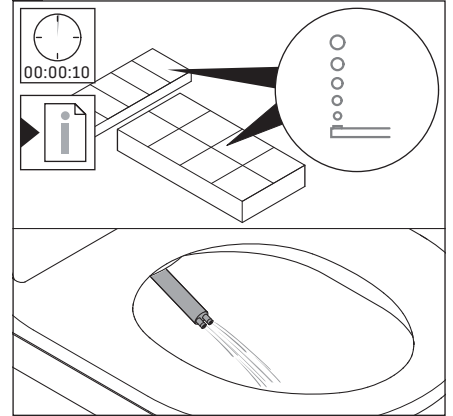
41



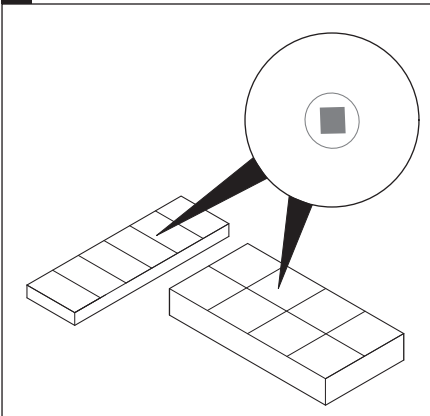
42



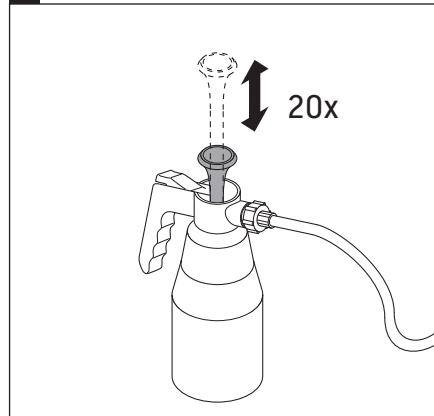
43



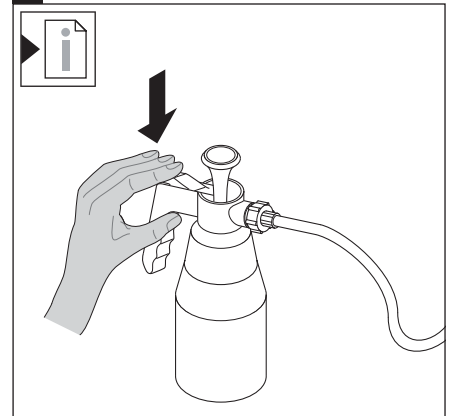
44



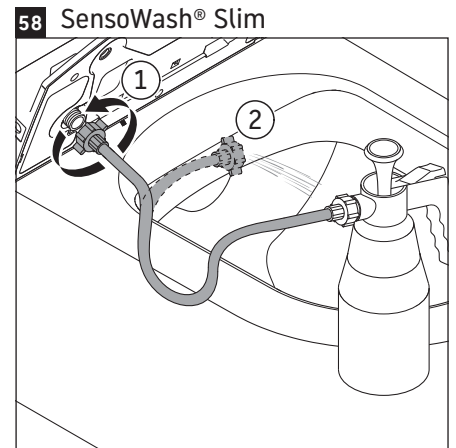
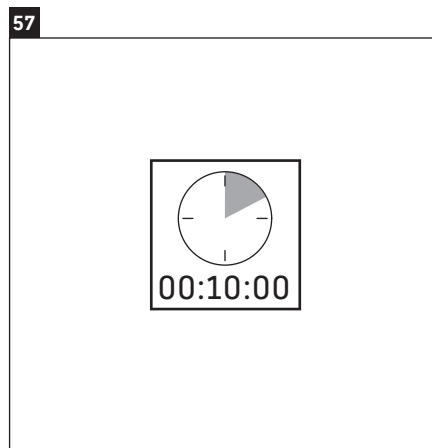
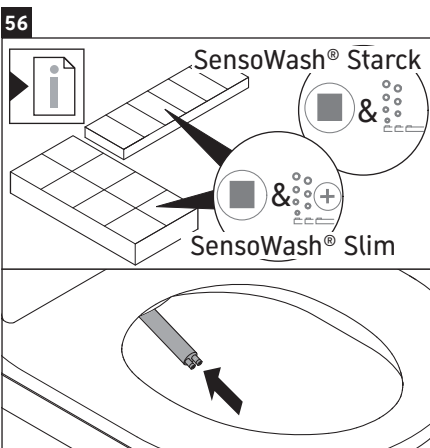
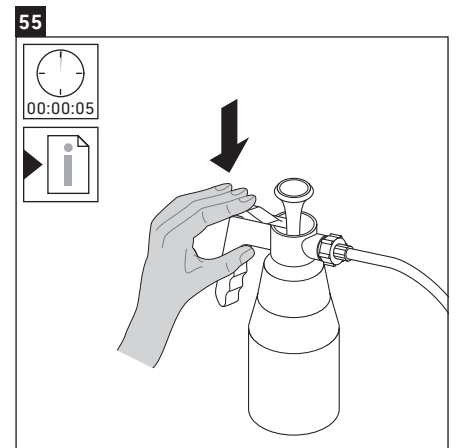
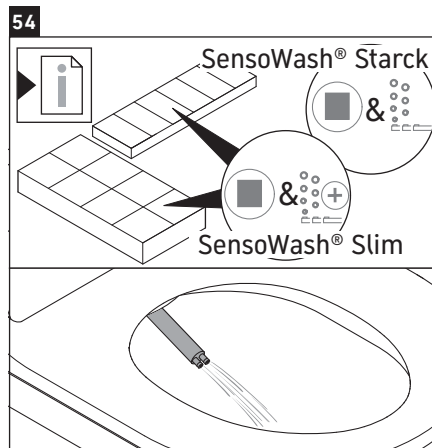
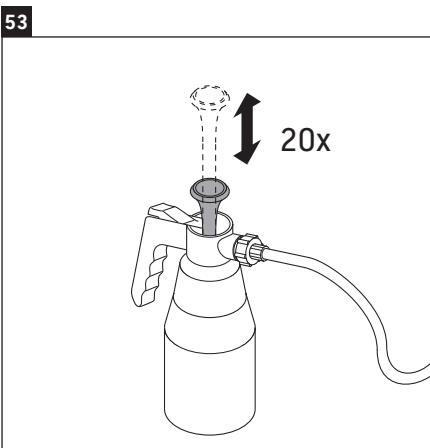
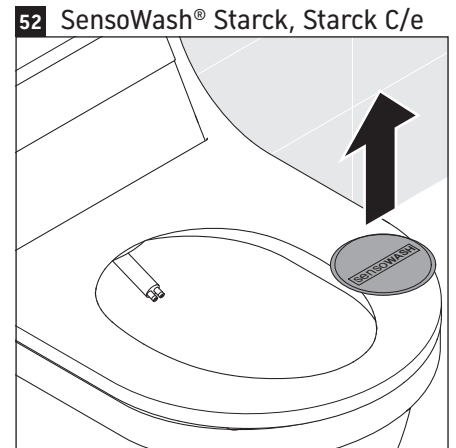
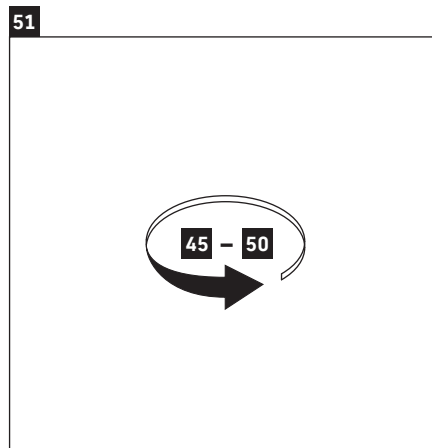
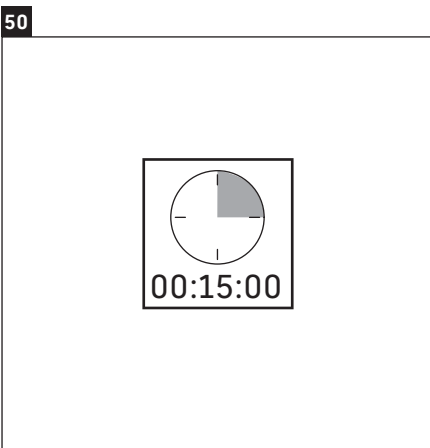
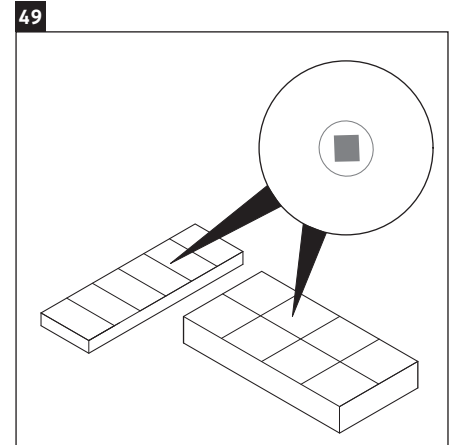
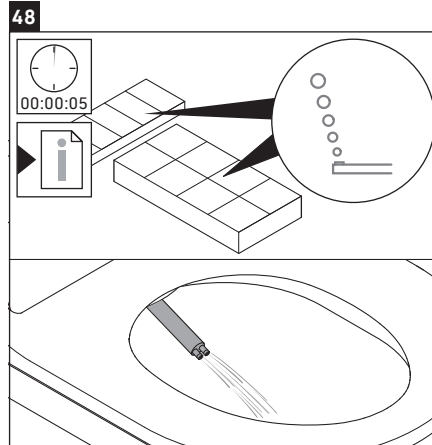
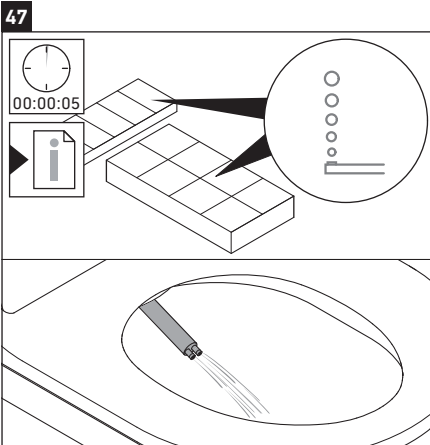
45



46

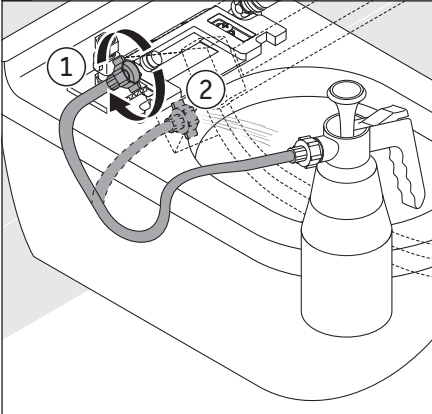




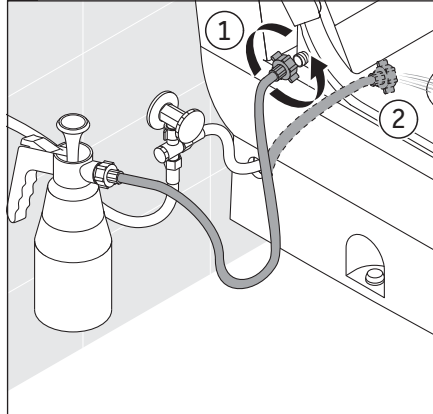




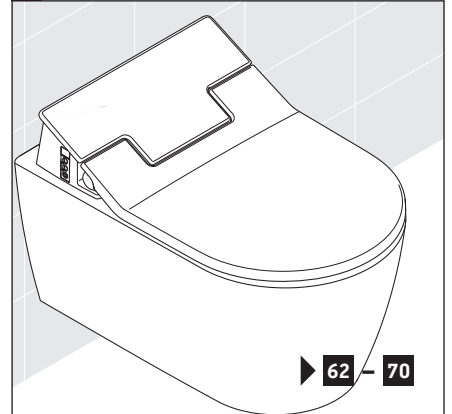
59 SensoWash® Starck C/e



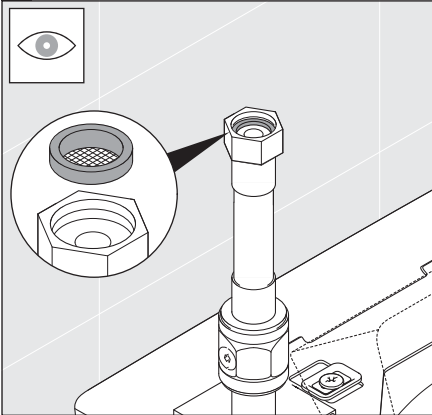
60 SensoWash® Starck



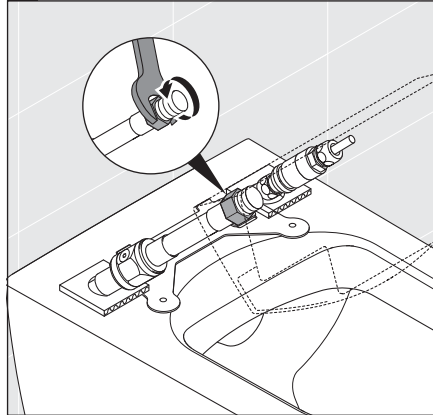
61 SensoWash® Slim



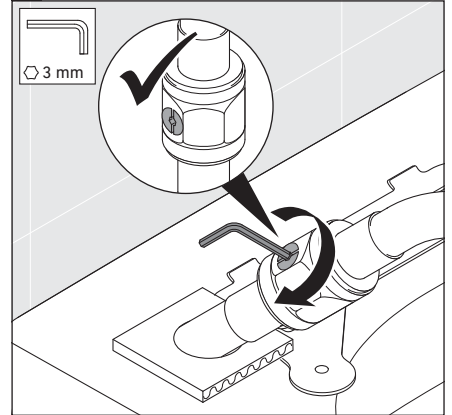
62



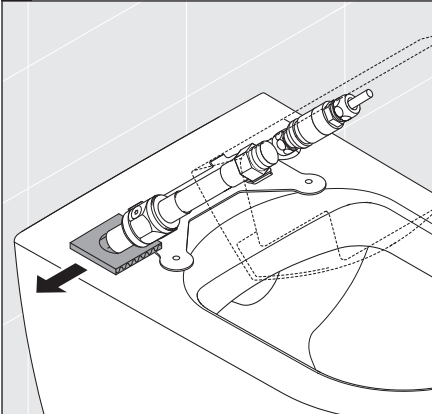
63



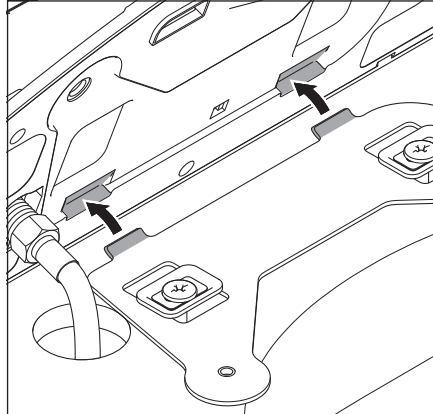
64



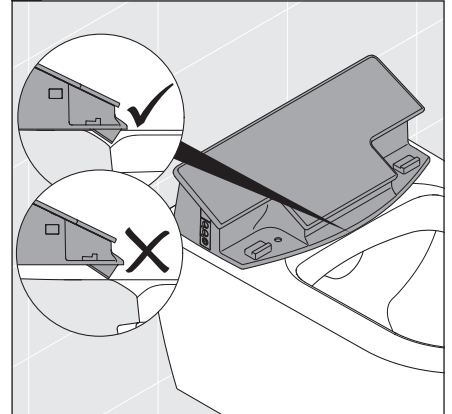
65



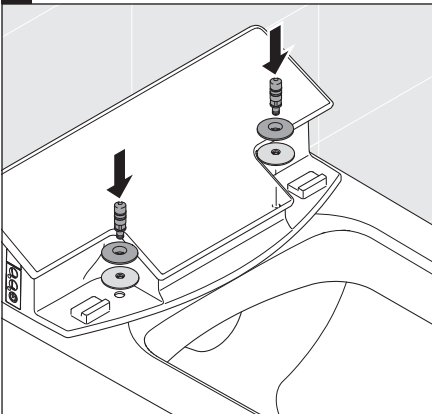
66



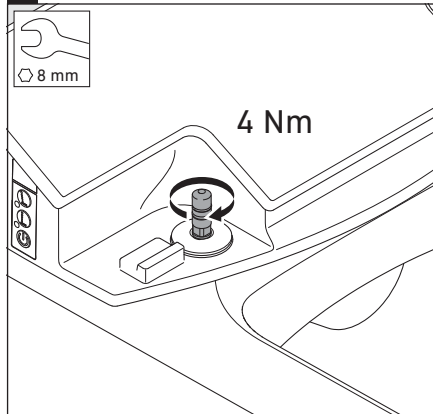
67



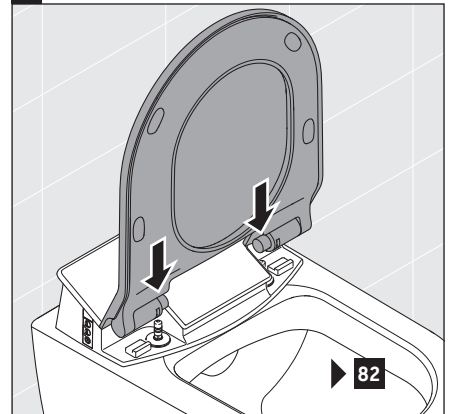
68



69

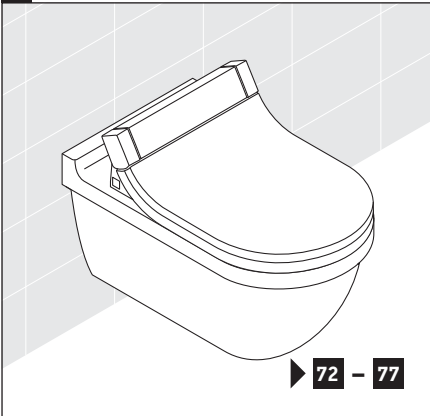


70

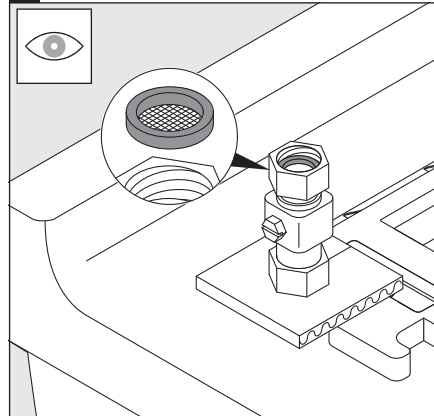




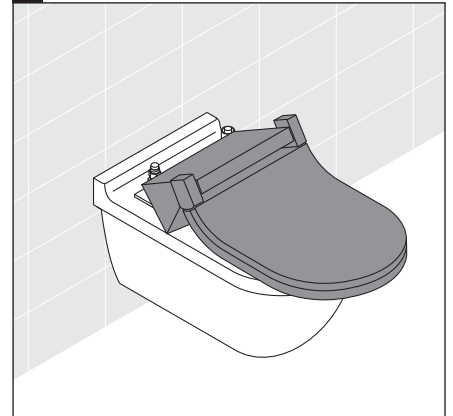
71 SensoWash® Starck C/e



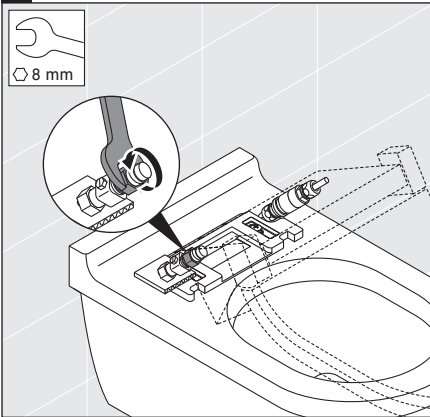
72



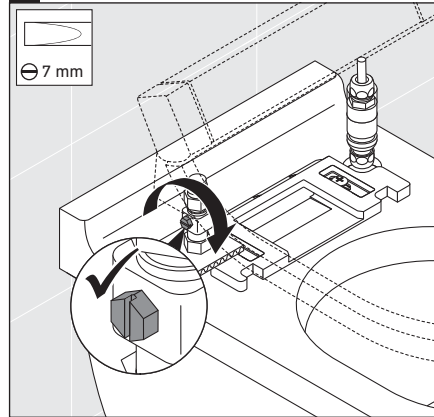
73



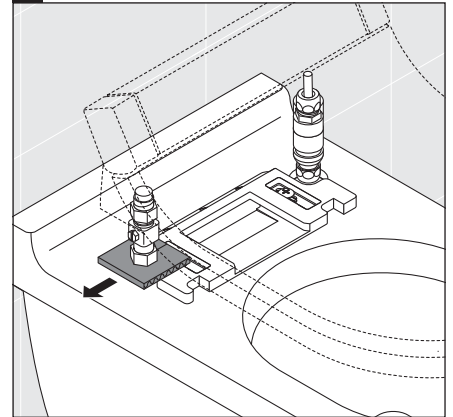
74



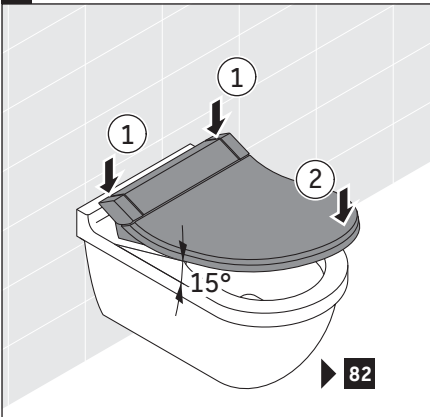
75



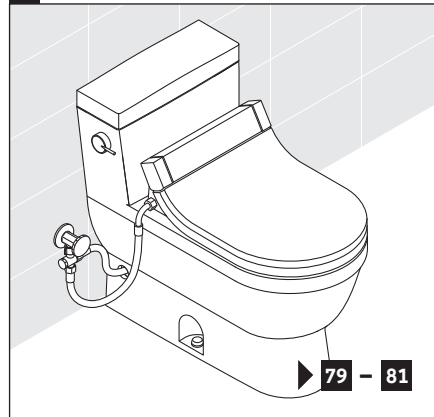
76



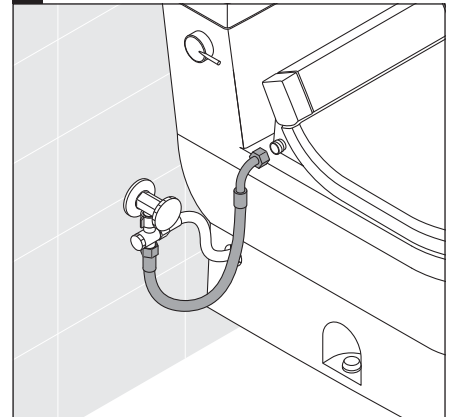
77



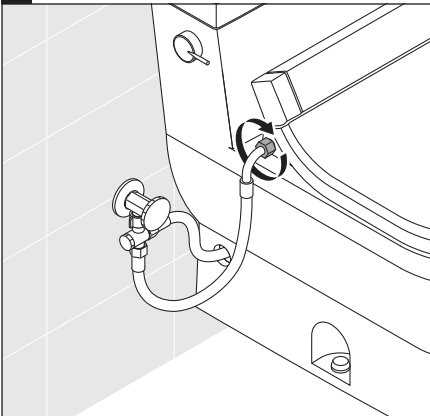
78 SensoWash® Starck



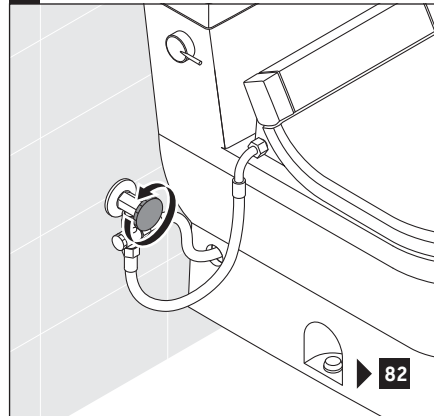
79

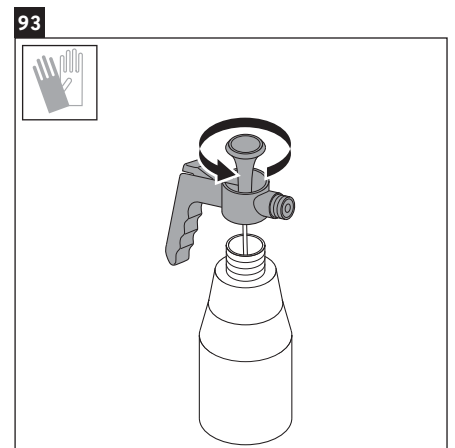
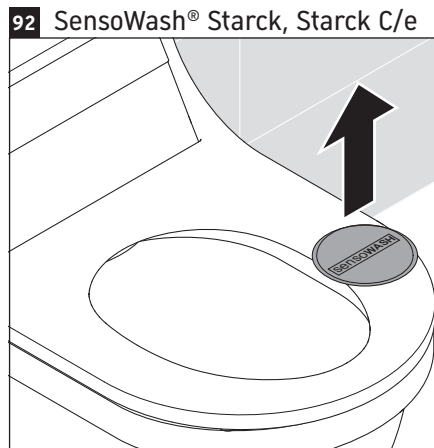
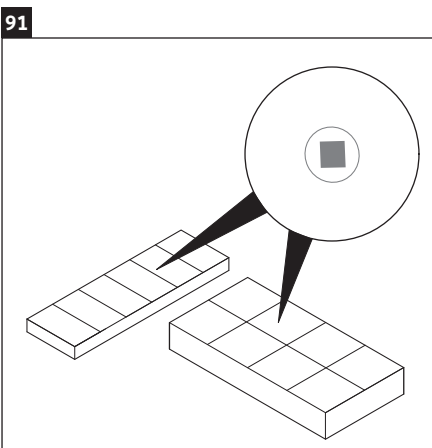
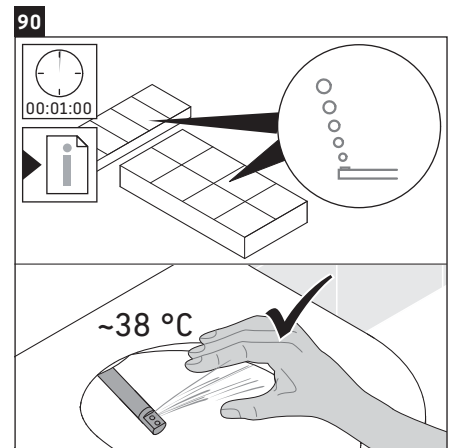
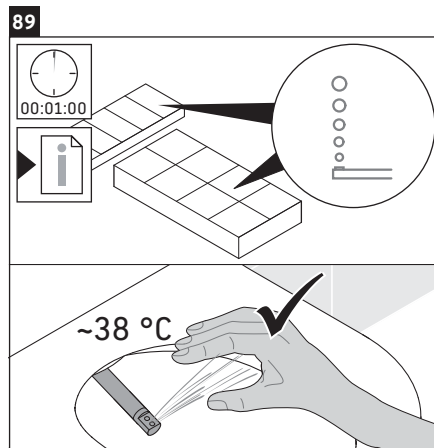
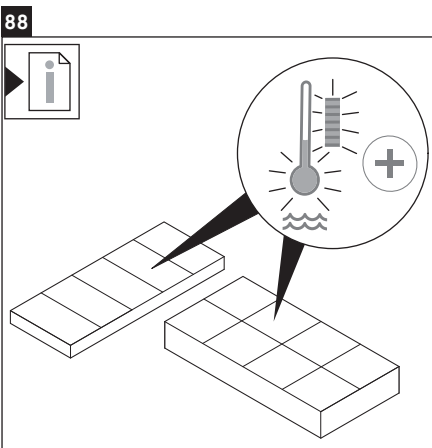
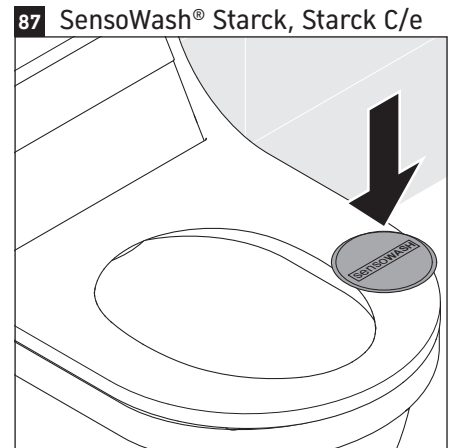
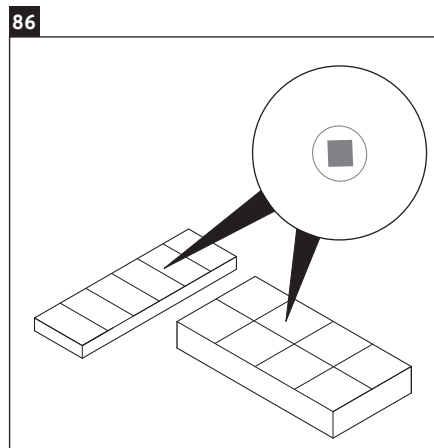
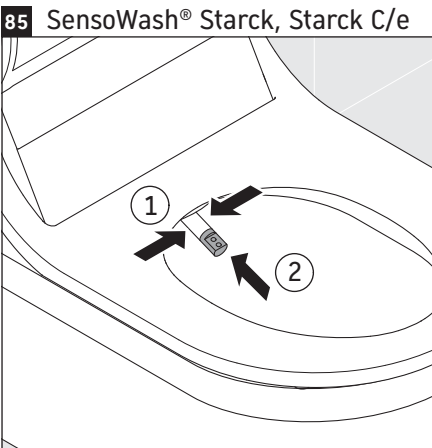
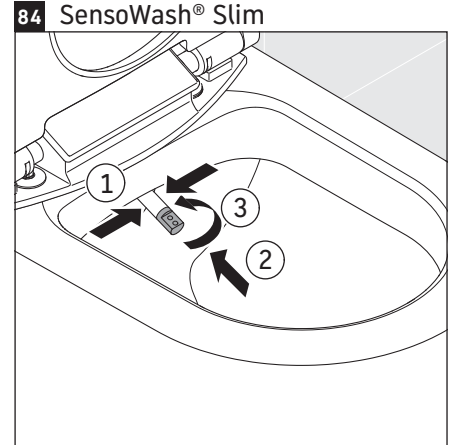
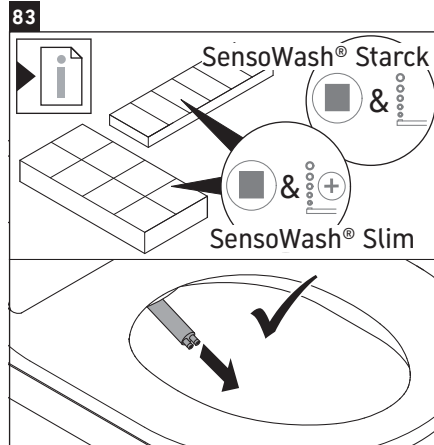
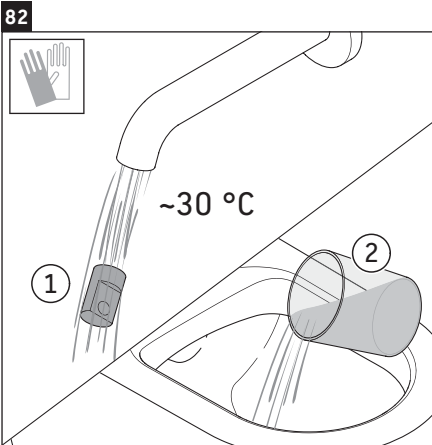


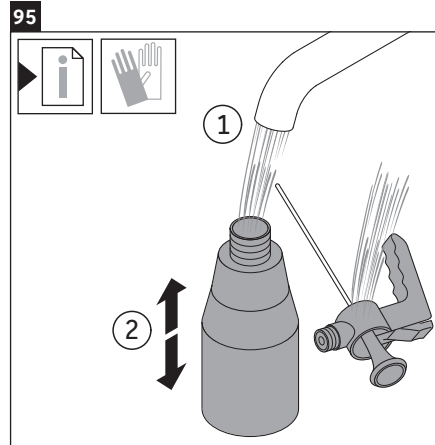
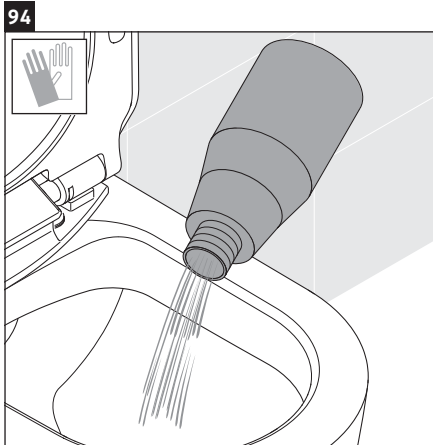
80



81













**DURAVIT AG**  
P.O. Box 240  
Werderstr. 36  
78132 Hornberg  
Germany  
Phone +49 78 33 70 0  
Fax +49 78 33 70 289  
info@duravit.com  
www.duravit.com

